

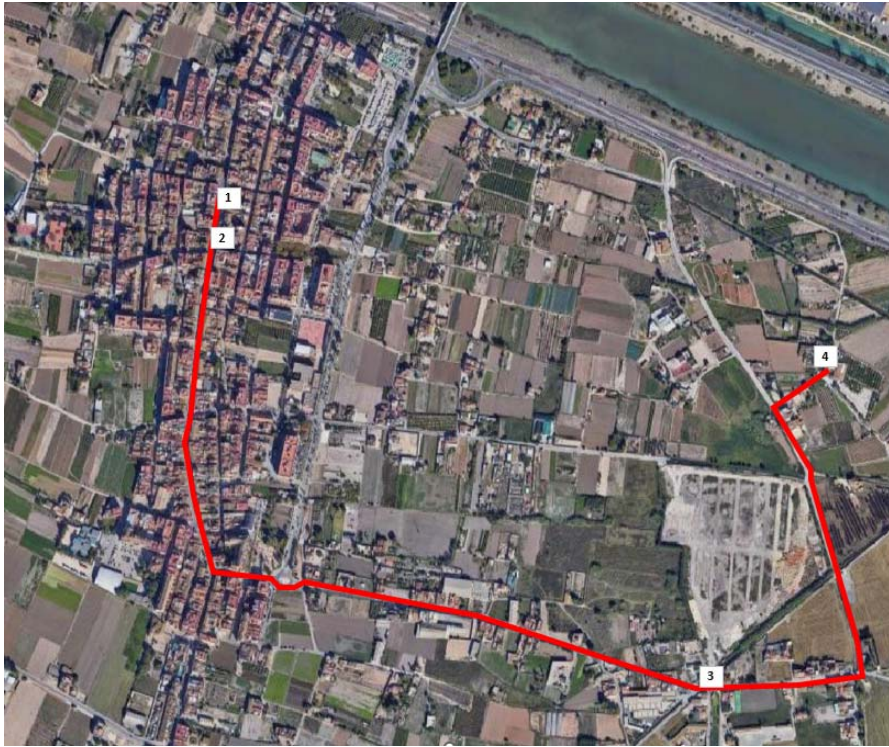


# 4. FARMHOUSE OF EL BROSQUIL

TOURIST ROUTE THROUGH SOUTHERN VILLAGES  
- CASTELLAR-L'OLIVERAL

**V** TURISMO  
DE BARRIOS

## GENERAL MAP OF THE ROUTE



## LOCATION OF THE TOURIST ATTRACTION



AJUNTAMENT  
DE VALÈNCIA

## HISTORY

The Farmhouse of El Brosquil possibly dates back to the medieval period, and some authors associate it with the true location of the “Castelló de l’Albufera” mentioned in some texts from that era, although the exact date of its construction is unknown. It appears in the Map of the Particular Contribution of València included by Cavanilles in 1797 (**photos 1, 2, 3, and 6**).

The farmhouses (alquerías) of the huerta of València are one or two-storey buildings that served as homes and warehouses associated with agricultural operations.

The main body of this alquería is defined by two parallel walls and a central axis, along with the entrance, which structures the house and provides access from the main facade to the courtyard. It contains the staircase leading to the upper floor, called the “cambra,” which likely served as a drying room. The ground floor functions as living quarters, with large rooms corresponding to bedrooms or alcoves. A staircase leads to the upper floor where the kitchen is located, with its own features such as pantries and a well connected to it through a window. Some rooms can also be observed to be separated by a hallway, probably of modern origin.

The upper floor has a great height and features large beds for silkworm breeding, along with other areas used for crop storage and dovecotes.

The courtyard is defined by "porxades" (arcades) constructed around its perimeter, with storerooms, corrals, and drying rooms.

It was declared an Asset of Local Relevance in 2015 in the "Catalogue of Protected Assets and Spaces" of the General Urban Plan of the city of València.

The surroundings of the alquería, with other rural constructions and the landscape of the huerta, are also of great interest (**photos 3 and 4**).

## GENERAL INFORMATION

**Address:** Camí del Brosquil, 3.

### ACCESSIBILITY

**Access:** Access is via rural paths.

**Parking:** There are parking spaces for people with reduced mobility at the entrance of the restaurant adjacent to the alquería.





**PHOTO 1 and 2.** Farmhouse of El Brosquil. Historical and current images.





**PHOTO 3.** Another view of the alquería

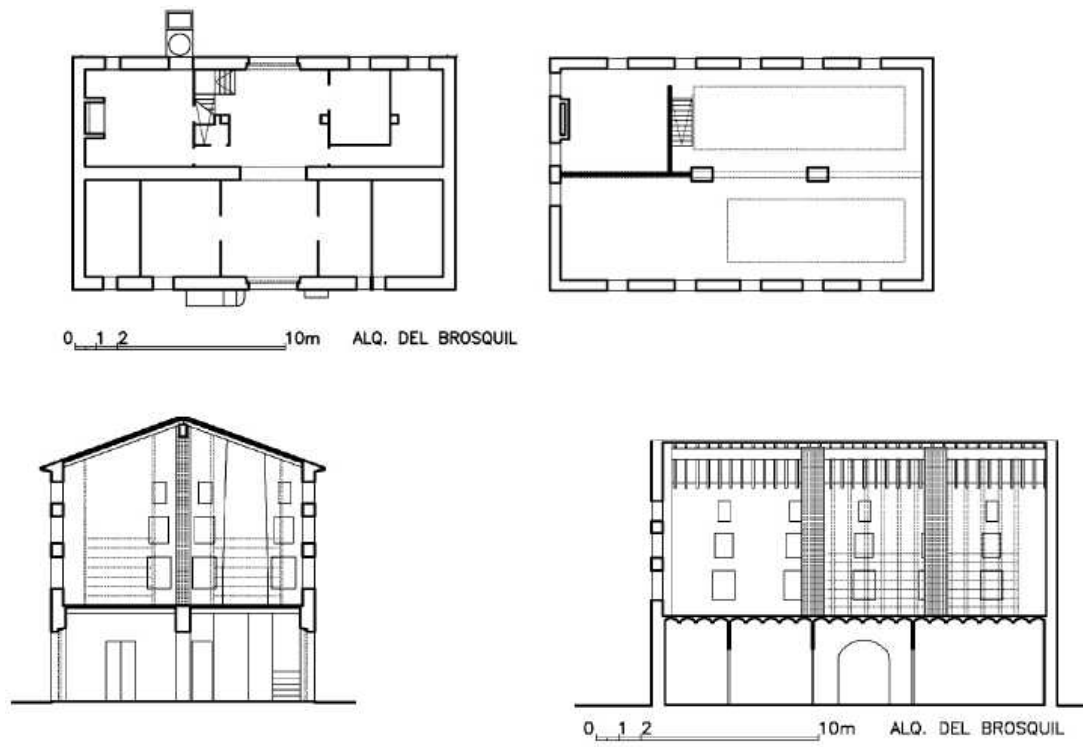






**PHOTO 4 and 5.** Huerta surroundings of the Alquería del Brosquil





**PHOTO 6.** Plan, elevation, and profile of the Farmhouse of El Brosquil. (edu.gva.es)