

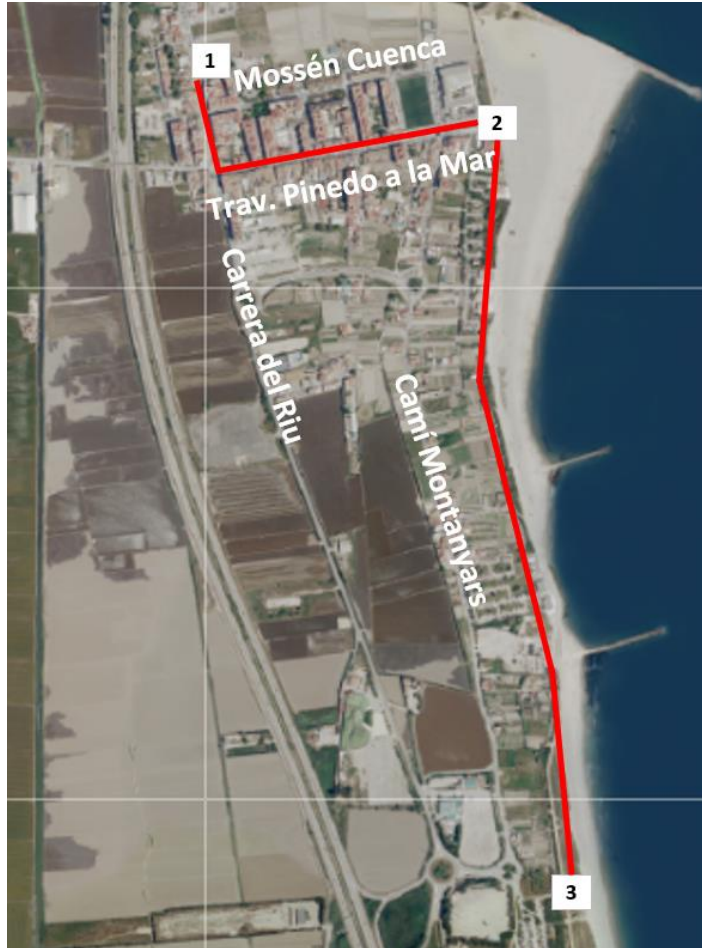


# 3. L'ARBRE DEL GOS BEACH

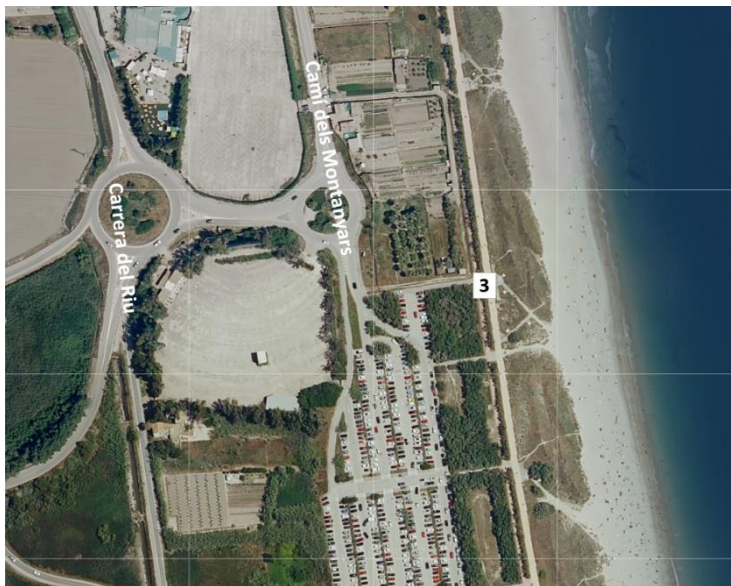
TOURIST ROUTE THROUGH SOUTHERN VILLAGES- PINEDO

 TURISMO DE BARRIOS

## GENERAL MAP OF THE ROUTE



## LOCATION OF THE TOURIST ATTRACTION



AJUNTAMENT DE VALÈNCIA

## HISTORY

Following the route along the beautiful seafront promenade, we arrive at one of Valencia's finest beaches, where we can enjoy the first dunes of the Albufera Natural Park: Playa de l'Arbre del Gos ("Dog's Tree Beach") (**photos 1, 2**).

Opened in its current state in 2007 after the completion of dune regeneration works and the construction of a seafront promenade for pedestrians and cyclists, this beach is equipped with health services, restrooms, adapted walkways, surveillance towers, and ramps for disabled beach access.

Further south, continuing along the cycle and pedestrian path, the beach becomes more wild (**photos 5, 6**). It should be noted that the central area of the beach is often used for nudism.

Continuing along the cycle and pedestrian path towards El Saler, you will encounter a unique boat-shaped building, about 40 meters long, originally conceived as a School for Dockworkers to practice loading and unloading. The facility replicated the deck of a cargo ship to scale. Although the distinctive structure was rehabilitated with plans to house an information and documentation center for the Albufera Natural Park, it is currently not in use (**photos 3, 4**).

## GENERAL INFORMATION

**Address:** Access via Carrera del Riu and Camí dels Montanyars.

## ACCESIBILIDAD

**Parking:** There are several disabled parking spaces (PMR) in the beach access parking area.

**Access:** There are adapted walkways and access ramps for people with reduced mobility.





**PHOTO 1 and 2.** Landscape of L'Arbre del Gos Beach.



**PHOTO 3 and 4.** The dockworkers' school building (top photo: valenciasecreta.com)



**PHOTO 5.** Signage at L'Arbre del Gos Beach



**PHOTO 6.** Cycling path that connects Pinedo with El Saler along L'Arbre del Gos Beach.