

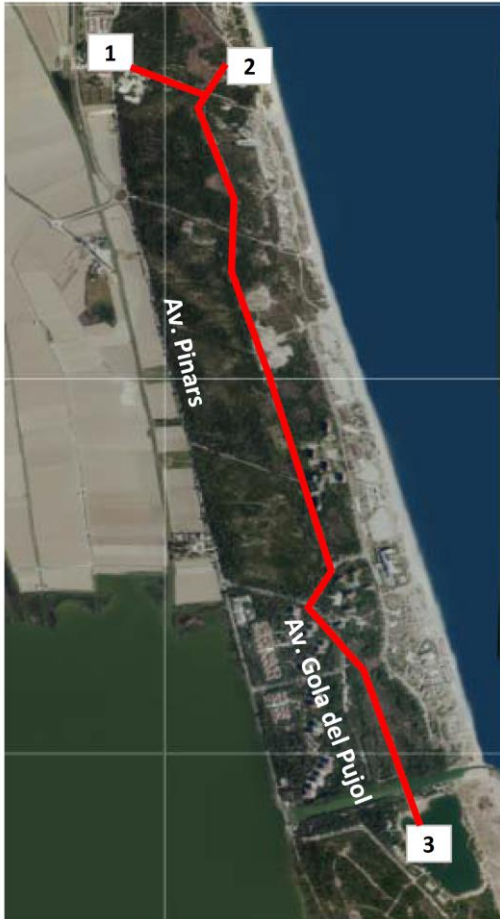


# 3. EL SALER LAKE (ESTANY DEL PUJOL)

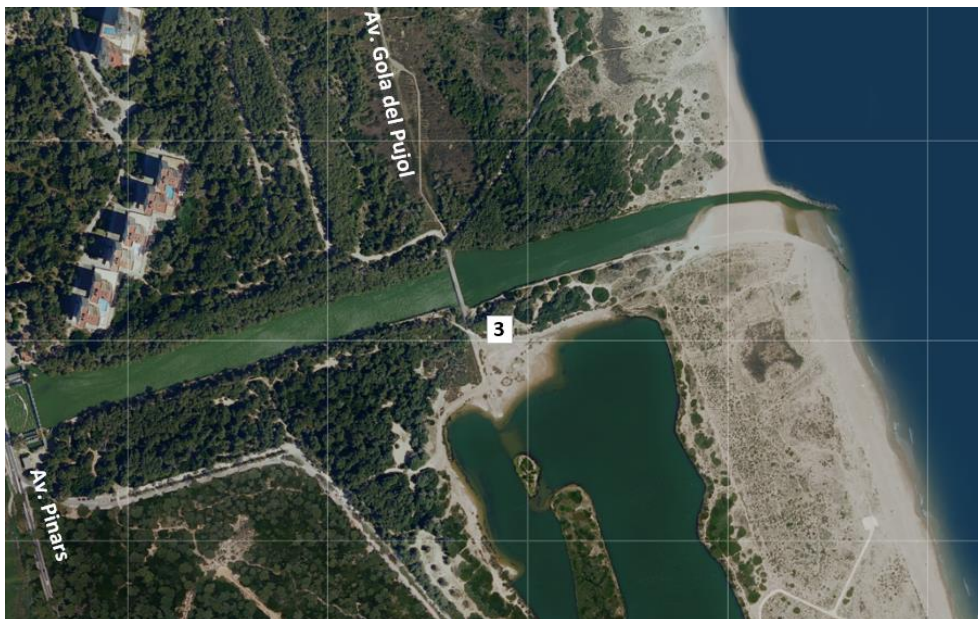
TOURIST ROUTE THROUGH SOUTHERN VILLAGES – EL SALER

**TURISMO DE BARRIOS**

## GENERAL MAP OF THE ROUTE



## LOCATION OF THE TOURIST ATTRACTION



AJUNTAMENT DE VALÈNCIA

## HISTORY

In 1962, the City Council of València initiated a development project in Devesa del Saler to transform it into a tourist and summer resort area. Roads were built as well as some residential towers, but protests from local residents, environmental experts, and even Félix Rodríguez de la Fuente (famous Spanish naturalist) led to the project being halted a few years later.

Among the developments was the construction of an artificial lake (**photos 1 and 2**) next to the gola del Pujol (a canal connecting the lake to the sea, regulated by gates) (**photos 3 and 4**), built on an old "mallada". In this region, "malladas" refer to low-lying flat areas between the variable dune line closer to the sea and the fixed dune line nearer to Albufera. These spaces host a unique ecosystem with wet or dry soil depending on the season, and the edges are home to "borró" (*Spartina versicolor*), a plant traditionally used to cover the roofs of Valencian barracas. The soil here was also used to make the rough floors of these traditional Valencian homes.

During the extensive landscape restoration process undertaken in recent decades, the decision was made to maintain this artificial lake, originally planned as a marina, as a nature reserve. After the construction was halted and the subsequent renaturalization of the lake, it has become an excellent breeding area for numerous bird species, some of which are in vulnerable conservation status. Access to the lake shores is prohibited to prevent disturbance to the existing fauna, and swimming in the lake is also dangerous.

The lake has been renamed "estany del Pujol," referring to the main toponym of the area. "Pujol" in Valencian means mound or hill, referring to the tall dunes near the outlet of the gola with the same name. These dunes or "montanyar del Pujol" reach heights of up to 9.5 meters and were saved from destruction caused by the urbanization project.

It's worth taking a relaxing stroll along the perimeter path of the lake, after crossing the gola del Pujol, and enjoying the various marked trails (**photos 5 and 6**) in the area, which include botanical, historical, scenic, and ornithological routes. Nearby, at the confluence of Gola del Pujol with Albufera, you'll find one of the most well-known and frequented piers on the lake, with a recently restored typical Valencian barraca (**photo 7**), where you can admire a beautiful sunset (**photo 8**) and take a boat ride in an "albuferenc" (a traditional boat of the lake).

If you extend your itinerary southwards, you can enjoy the beach of Garrofera and reach Casal d'Esplai, a building that currently houses a hostel in the most protected and biologically diverse area of Devesa del Saler. The beach features 1.5 km of fine sandy areas with gravel zones, surrounded by dunes and pine forests, noting that the first stretch is naturist.

## GENERAL INFORMATION

**Address:** Access via Gola del Pujol Avenue and Los Pinares Avenue.

## ACCESSIBILITY

**Parking:** There are several disabled parking spaces (PMR) in the access parking lot for the beach.

**Access:** There are adapted walkways and ramps for disabled access.





**PHOTO 1 and 2.** The Pujol lake or estany.



**PHOTO 3 and 4.** The Pujol canal





PHOTO 5. Informational signage of the Albufera Natural Park.



PHOTO 6. View of the surroundings





**PHOTO 7 and 8.** Pier and viewpoint of the Pujol canal. Sunset views (photo 8: Visit Valencia)

